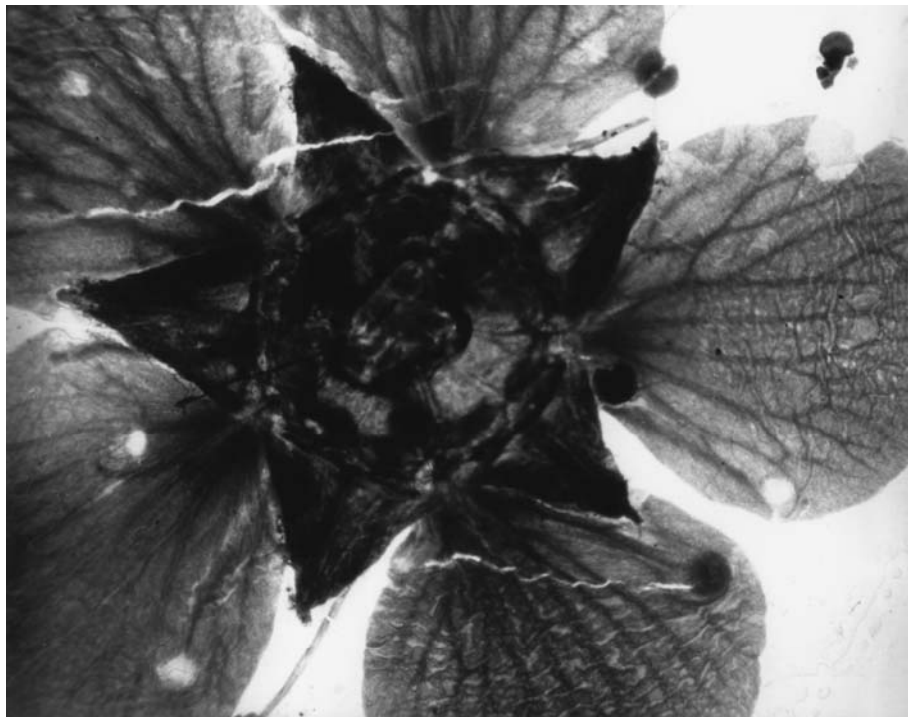


Garden Pieces



This month **BFI Southbank** springs forth with a stunning study of flora and fauna from around the world: from flowers to trees, backyards to gardeners' gardens, this series of three programmes of archive and artists' films presents a rare opportunity to see, experience and reflect on the garden. It includes works from 100 years of cinema, by **Kenneth Anger**, **Bruce Baillie**, **Stan Brakhage** and **Margaret Tait** amongst others.

Some of these films offer the glimpse of a garden as part of daily life, like the Orkney garden glimpsed in **Margaret Tait's** *A Portrait of Ga* (1952), and the snow covered garden of *Pitcher of Coloured Light* (2007) by **Robert Beavers**. Others celebrate the shape and form of flowers from **Percy Smith's** *Birth of a Flower* (1910) to Stan Brakhage's *Garden of Earthly Delights* (1981); and those in the Villa D'Este in Kenneth Anger's *Eaux D'Artifice* (1954) and the ecological gardens of France in **Rose Lowder's** jewel like one minute 16mm *Bouquets* (2001 – 2005). These programmes offer an opportunity to reflect on looking at, and experiencing the garden, including the fantastical with *The Flower Fairy* (1910) by **Pathé Freres** and **Percy Stow** and **Cecil M Hepworth's** *Alice in Wonderland* (1903).

Programme:
Garden Pieces

Birth of a Flower (UK 1910. Percy E Smith. 6min); *All My Life* (USA 1966. Bruce Baillie. 3min); *Flight* (UK 1988. Guy Sherwin. 4min); *Elegy* (UK 2001. Anthea Kennedy & Ian Wiblin. 3min); *Eaux d'Artifice* (USA 1954. Kenneth Anger.

13min); *How To Dig* (UK 1941. Jack Ellitt. 14min); *For You* (UK 2000. Peter Todd. 3min); *Garden Pieces* (UK 1998. Margaret Tait. 12min); *Mothlight* (USA 1963. Stan Brakhage. 4min); *Alice in Wonderland* (UK 1903. Percy Stow & Cecil M Hepworth. 7min); *Ma: Space/Time in the Garden of Ryuoan-Ji* (Japan 1989. Takahiko Iimura. 16min); *The Kiss* (UK 1999. John Smith & Ian Bourn. 5min)

The shapes of flowers – filmed in 1910 by Percy Smith, and in 1999 by John Smith and Ian Bourn – cradle this programme. In between we study a pigeon in a tree, see a garden from the viewpoint of a cat, experience the fountains of the Villa D'Este, are taught *How To Dig*, feel flora and nature projected onto the screen direct in *Mothlight*, realise the Japanese concept of time/space through the zen garden of Ryona-Ji, and more.

Tue 14 April 18:20 NFT2

Trees, Plants, Flowers – Lives

Tronco Luxurioso (France 1992. Olivier Bougnot. 12min); *L'Arbre Bleu* (France 2001. Marcelle Thirache. 2min); *Landscape (for Manon)* (USA 1987. Peter Hutton. 11min); *The Flower Fairy* (France 1910. Pathé Freres. 1min); *Im Garten* (Germany 2002. Ute Aurand & Baerbel Freund. 29min); *The Garden of Earthly Delights* (USA 1981. Stan Brakhage. 2min); *An Office Worker Thinks of Their Love, and Home* (UK 2003. Peter Todd. 4min); *Portrait of Ga* (UK 1952. Margaret Tait. 7min); *Fur Frau Foerster* (Germany 2002. Ute Aurand & Baerbel Freund. 5min); *Valentin de las Sierras* (USA 1967. Bruce Baillie. 10min); *Quiproquo* (France 1992. Rose Lowder. 13min)

A portrait of the garden, designed in Potsdam-Bornim in 1910 by gardener and philosopher of nature Karl Foerster, and filmed at monthly intervals to show how it changes over the year, provides a core for a programme in which to experience landscapes including the Hudson River (USA), Mount Ventoux (France), and fleeting views of flowers in daily life; in an Orkney garden, a London back garden, flowers and vegetation in Mexico, and also a plane tree viewed from a window. With masterpieces of 16mm film-making from Bruce Baillie and Margaret Tait.

Mon 20 April 20:40 NFT2

Glimpse of the Garden

Glimpse of the Garden (USA 1957. Marie Menken. 5min); *Emily Died* (USA 1997. Anne Charlotte Robertson. 26min); *Bouquets 21-30* (France 2001-2005. Rose Lowder. 14min); *Pitcher of Coloured Light* (USA 2007. Robert Beavers. 24min); *The Spirit of the Navajos* (USA 1966. Maxine & Maryjane Tsosie. 21min)

'Without those who love me and whom I love, these small films could not have existed'. Marie Menken's words speak of the work of many film-makers and equally of the close relationships with the garden which we experience with Anne Charlotte Robertson in reel 80 of her five-year 8mm film diary (on video), with organic and natural farming and gardening in France in the most recent *Bouquets* of Rose Lowder, and the home, house and garden of Robert Beavers' mother. We end with a Navajo medicine man collecting plants.

Wed 22 April 18:20 NFT2

Booking information

The BFI Southbank is open to all. BFI members are entitled to a discount on all tickets. BFI Southbank Box Office tel: 020 7928 3232. Unless otherwise stated tickets are £8.60, concs £6.25 Members pay £1 less on any ticket. Website www.bfi.org.uk/southbank

There's more to discover about film and television through the BFI. Our world-renowned archival collections, cinemas, festivals, films, publications and learning resources are here to inspire you.

*** PICTURE DESK ***

A selection of images for journalistic use in promoting BFI Southbank screenings can be found at www.image.net under BFI / BFI Southbank / April 2009