

Film production in the UK – Jan to Sept 2011

BFI Research and Statistics Unit

3 November 2011

There were 86 films with budgets of £500k or more that commenced principal photography in the UK in the first nine months of 2011, the lowest number of the last nine years. Twenty-three were co-productions, 47 were domestic UK features and 16 were inward investment films (Table 1 and Figure 1).

Table 1: Number of features produced in the UK, Q1-Q3 2003 to Q1-Q3 2011

	2003 Q1-Q3	2004 Q1-Q3	2005 Q1-Q3	2006 Q1-Q3	2007 Q1-Q3	2008 Q1-Q3	2009 Q1-Q3	2010 Q1-Q3	2011 Q1-Q3
Co-productions	80	80	48	46	23	20	12	12	23
UK domestic features	40	31	41	45	53	62	74	62	47
Inward investment feature films	35	20	29	20	26	24	30	24	16
Total	155	131	118	111	102	106	116	98	86

Source: BFI

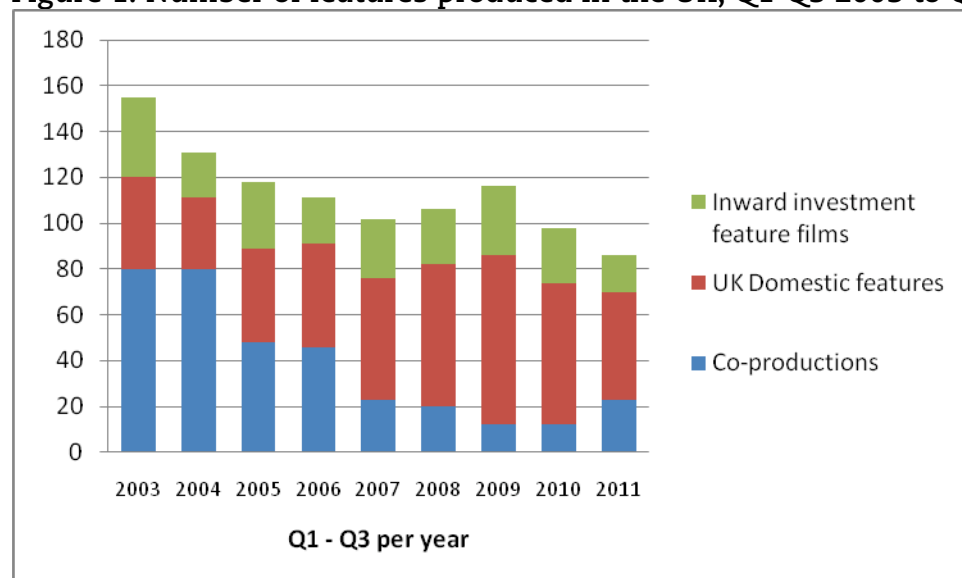
Data for films with budgets >= £500k.

“Q1-Q3” means films commencing principal photography between 1 January and 30 September in each year.

Data are rounded to the nearest £0.1m so may not sum exactly to the totals shown.

See notes at the end of this release for the full definitions applied.

Figure 1: Number of features produced in the UK, Q1-Q3 2003 to Q1-Q3 2011



Source: BFI

Data for films with budgets >= £500,000

Q1-Q3 means films commencing principal photography between 1 January and 30 September each year.

Significant inward investment titles shooting in Q3 2011 include *Snow White and the Huntsman*, *Trance*, *Dark Shadows* and *World War Z*.

Domestic UK titles commencing production in Jan-Sept 2011 included *Anna Karenina*, *Quartet*, *Now is Good* and *Welcome to the Punch*.

Significant co-productions shooting in Jan-Sept 2011 were *StreetDance 2 3D*, *Good Vibrations* and *Something in the Air*.

The UK spend of features that commenced principal photography in the first nine months of 2011 was £1,039.8 million, the highest on record. Overall production spend was up £28.7 million compared with Jan-Sept 2010 (£1,011.1 million) and £3.7 million higher than Jan-Sept 2009 (£1,036.1million) (Table 2 and Figure 2). The bulk of the activity (£860.9million) was accounted for by inward investment productions, that is films which are substantially financed and controlled from abroad (mostly from the USA) but shot in whole or part in the UK. The value of domestic production decreased by £11.5 million (to £138.1 million) compared with Jan-Sep 2010, but the recovery in the UK spend of co-productions continues, with a 59% increase to £40.8million.

Table 2: UK spend of features produced in the UK, Q1-Q3 2003 to Q1-Q3 2011

	2003 Q1-Q3	2004 Q1-Q3	2005 Q1-Q3	2006 Q1-Q3	2007 Q1-Q3	2008 Q1-Q3	2009 Q1-Q3	2010 Q1-Q3	2011 Q1- Q3
Co-productions	115.2	117.9	73.5	102.1	59.7	47.1	17.3	25.6	40.8
UK domestic features	185.8	104.8	125.2	144.4	127.1	185.8	209.1	149.6	138.1
Inward investment feature films	608.9	538.1	246.7	431.5	592.0	323.1	809.8	835.8	860.9
Total	909.9	760.9	445.4	678.0	778.8	556.1	1,036.1	1,011.1	1,039.8

Source: BFI

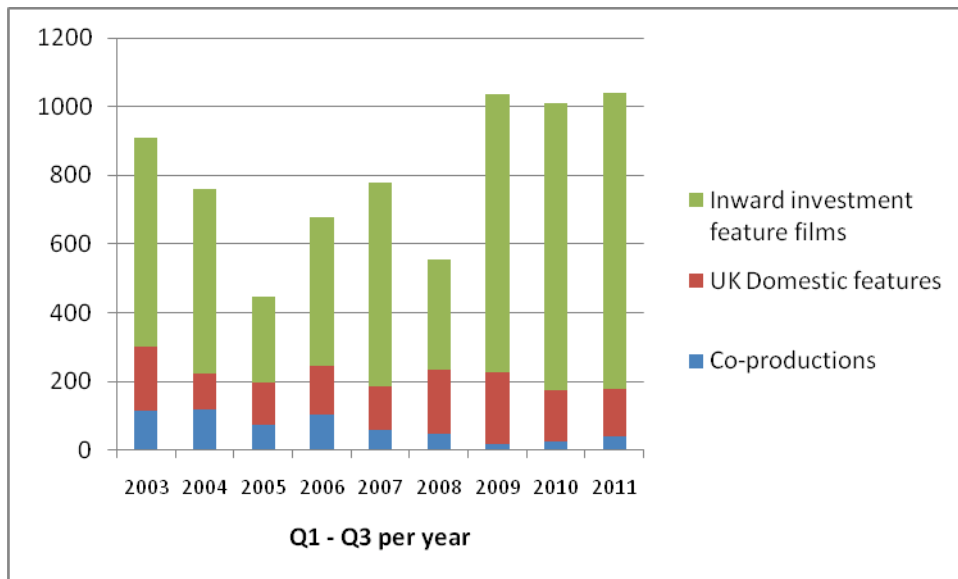
Data for films with budgets >= £500k.

"Q1-Q3" means films commencing principal photography between 1 January and 30 September in each year.

Data are rounded to the nearest £0.1m so may not sum exactly to the totals shown.

See notes at the end of this release for the full definitions applied.

Figure 2: UK spend on features produced in the UK, Q1-Q3 2003 to Q1-Q3 2011



Source: BFI
 Data for films with budgets \geq £500,000
 Q1-Q3 means films commencing principal photography between 1 January and 30 September in each year

Notes

1. BFI Research and Statistics Unit production tracking

The Research and Statistics Unit production tracking system attempts to track all films produced in whole or part in the UK (i.e. it is a census, not a sample).

Sources of information include the British Film Commission, industry tracking forums, Skillset, trade press and internet sources, UK film certification data and direct approaches to film producers.

We do not have comprehensive coverage of very low budget films before 2011 so we publish data only for films with budgets of £500k+. A full summary of low budget film production in the UK will appear in the full year 2011 statistics report to be published in January 2012.

Only productions with some UK spend on shooting, visual effects or post-production are included.

Spend is allocated to the calendar year, half year and quarter in which principal photography starts.

2. Revisions

Production tracking is a continuous process and numbers are updated each quarter to reflect newly tracked films, updated budget or UK spend information and postponements or cancellations. Adjustments apply to previous periods as well as to the most recent reported period. The tables in this report contain revised data.

3. Definitions

A **domestic** (indigenous) UK feature is a feature made by a UK production company that is produced wholly or partly in the UK

A **UK co-production** is a co-production (other than an inward co-production) involving the UK and other country partners usually under the terms of a bilateral co-production agreement or the European Convention on Cinematographic Co-production.

An **inward feature** is a feature film which is substantially financed and controlled from outside the UK, where the production is attracted to the UK because of script requirements, the UK's infrastructure or UK tax incentives. Many (but not all) inward features are UK films by virtue of their UK cultural content and the fact that they pass the Cultural Test administered by the BFI Certification Unit on behalf of the Secretary of State for Culture, Olympics, Media and Sport.

An **inward feature co-production** is an official co-production that originates from outside the co-production treaty countries (usually from the USA) and which is attracted to the UK because of script requirements, the UK's infrastructure or UK tax incentives

A **VFX-only film** is a film that has a substantial quantity of digital visual effects made in the UK at one of the UK's main VFX houses but no other UK spend.

Inward investment (INW) is the total of inward features, inward feature co-productions and VFX-only inward investment films. These are summed as the number of inward co-productions is usually low, so showing their budgets or UK spend separately would be disclosive.

A **UK film** is a film that has been certified as British by the DCMS or by the Certification Unit of the British Film Institute (acting on the authority of the Secretary of State for Culture, Olympics, Media and Sport) or which is a *de facto* UK film by virtue of being made in whole or part in the UK by a UK production company.

A **US studio film** is a film that is produced in whole or part by one of the major US studios or one of the major US studios' specialist subsidiaries.

An **independent film** is a film made by an independent production company or group of independent production companies.

US studio films are generally distributed in most territories by the parent studio. Independent films are usually distributed by different distributors in different territories.

4. Disclosing individual film information

Individual film titles are not disclosed when the number of productions (co-production, domestic or inward) is low.

Pre-release Access

This release has been prepared according to the Code of Practice for Official Statistics published by the UK Statistics Authority (2009). Pre-release access has been granted to the following:

Amanda Nevill, Chief Executive, BFI
Carol Comley, Head of Strategic Development, BFI
Chris Travers, Director of Communications, Marketing & Audiences, BFI
Judy Wells, Head of Press & PR, BFI
Nick Mason Pearson, Director of Press & Public Affairs, BFI
Emma Hewitt, Press Officer, BFI
Tim Cagney, Deputy Chief Executive, BFI
Samantha Perahia, Senior Production Executive, British Film Commission
Hugh Muckian, Film Branch, Department for Culture, Media and Sport
Tim Scott, Film Branch, Department for Culture, Media and Sport
Paul Conroy, Senior Press Officer, Department for Culture, Media and Sport
Adrian Wootton, Chief Executive, Film London
Anna Hight, Head of Film Promotion & Culture, Film London
Colette Geraghty, Press & Communications Manager, Film London

Statistical contact details

This release was prepared by Sean Perkins and Nick Maine, Research and Statistics Unit, BFI.

sean.perkins@bfi.org.uk, tel 020 7173 3248

nick.maine@bfi.org.uk, tel 020 7173 3249

(end)